

# JOOLA®

for the **Champion** in you!

## Robot SHORTY

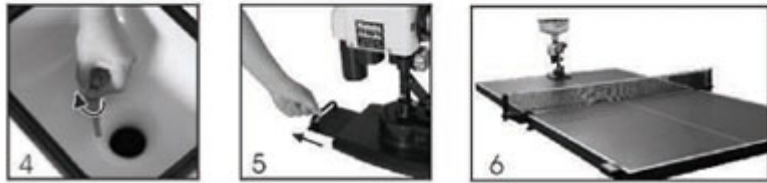
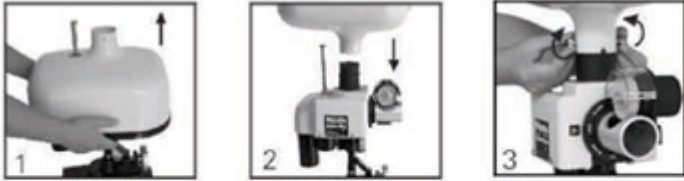
### Operating Instructions

Please read carefully before first use.



## Installation

Pull out the ball container vertically (picture 1). Aim to the position locating slot, and then position the ball container (picture 2). Tighten the container lock on both sides (picture 3). Tighten the poke bar inside the ball container (picture 4).



## Location

Place the robot in the central area close to the edge of the table. Install the support for the remote control on the edge of player's side and insert the control box into the support (picture 6).

## Adjustment of speed

The speed of the ball is adjusted with the knobs on the remote control. There are several stages of adjustment. The remote control saves the speed and ball frequency last used before switching off.

## Ways of serving balls

The ball can be served directly or indirectly. Direct balls have a higher speed and more rotation than indirect balls and can be adjusted with the loop adjustment knob.



## Adjustment of loop

Loop is adjusted with the loop adjustment knob. The loop also depends on where the robot is placed i.e. distance and height from the table.



## Adjustment of angle

The angle of the balls served is adjusted with the angle adjustment knob. The angle increases when the balls rotate clockwise and decreases when balls rotate anti-clockwise.



## Selection of rotation

Loosen the spin locking knob for adjustment of rotation. Turn the handle to the required position scale on the motor. Select the desired position of rotation and fasten the spin locking knob. The motor can be swung around for 180°.



## Security advice

Instruction should be given when machine is used by children. Do not use outside on windy or rainy days. When the robot is operating, please don't touch the friction wheel and poke bar and keep away from the shooting head. If you find something abnormal, such as smoke coming from the machine please stop the robot and unplug it immediately. Repair or service must be performed by a qualified person. After use switch off and unplug the robot.

*Subject to change without notice.*